



THE DAIRY BARN ARTS CENTER  
8000 DAIRY LANE . PO BOX 747  
ATHENS OHIO 45701  
phone 740.592-4981 . fax 740.592.5090  
e-mail arts info @ dairybarn.org  
www.dairybarn.org



## THE DAIRY BARN ARTS CENTER

is proud to offer the following international,  
juried exhibition as a touring exhibit  
for rental to venues across the United States:

# QUILT'13 National

available September 2013 through December 2015



**THE DAIRY BARN ARTS CENTER**  
 8000 DAIRY LANE . PO BOX 747  
 ATHENS OHIO 45701  
 phone 740.592-4981 . fax 740.592.5090  
 e-mail arts info @ dairybarn.org  
 www.dairybarn.org

# QUILT National



**Quilt National is a biennial juried competition dedicated to the promotion of the contemporary art quilt. It is a showcase for new work produced in the two year span prior to the exhibition. Its focus is to provide the viewer with a visual presentation of innovative trends in the medium of layered and stitched fabric.**



Helping to co-ordinate the jurors for the first Quilt National in 1979 is Nancy Crow, standing in the center, one of the people responsible for beginning the exhibition.



The Dairy Barn Arts Center



An early Dairy Barn interior; by its size and the breadth of its representation, Quilt National '79 immediately assumed the status of a milestone in the history of American art quilting.

In the late 1970s Athens, Ohio, was home to numerous talented artists. Included among this group were Nancy Crow, Françoise Barnes and Virginia Randles. These and other area artists were using fabric to create works that were pieced, layered, stitched and stuffed. These works were "quilts" by virtue of their structure, although they were intended to be viewed on a vertical plane. The original designs and use of innovative techniques and color combinations made them unacceptable to the organizers of traditional quilt shows who were most interested in beautifully crafted bedcovers with recognizable patterns. The only exhibit opportunities for these artists were in mixed media fiber shows alongside baskets and weavings.

Crow and Barnes recognized the need for an appropriate showcase for what are now known as "art quilts." They were just two of a dedicated corps of volunteers who decided to organize an exhibit devoted entirely to this relatively new breed of contemporary quilt.

Fortunately, this need coincided with the efforts of area artists and art lovers to preserve an abandoned dairy barn. Built in 1914 as part of a farm complex situated on grounds belonging to the state-owned mental health facility, the barn had served as part of the activities therapy program. Artists and others in the Athens community felt that the barn had the potential for a second life.

Quilt National was intended to demonstrate the transformations taking place in the world of quilting. Its purpose was then, and still is, to carry the definition of quilting far beyond its traditional parameters and to promote quiltmaking as what it always has been -- an art form.

The works in a Quilt National exhibit display a reverence for the lessons taught by the makers of the heritage quilts. Many of the works hold fast to the traditional methods of piecing and patching. At the same time, however, the Quilt National artist is intrigued by the challenge of expanding the boundaries of traditional quiltmaking by utilizing the newest materials and technologies. These innovative works generate strong emotional responses in the viewer while at the same time fulfilling the creative need of the artist to make a totally individual statement.



## THE DAIRY BARN ARTS CENTER

8000 DAIRY LANE . PO BOX 747

ATHENS OHIO 45701

phone 740.592-4981 . fax 740.592.5090

e-mail arts info @ dairybarn.org

www.dairybarn.org



Robin Schwalb  
Jive Boss Sweat  
COLLECTION A



Jan Meyers-Newbury  
Tilt-A-Whirl  
COLLECTION A



Cynthia Friedman  
A Man Among Giants  
COLLECTION B

# QUILT National



Each biennium, the 80+ piece Quilt National '13 exhibition is divided into three touring collections. The purpose of dividing the exhibition into smaller groups is to provide smaller venues the opportunity to display the Quilt National works. The three collections may be rented individually or in combination for one week or a group of weeks as available. The following is a listing of the artists and works assigned to the three Quilt National '13 Collections.

## COLLECTION A

ARTIST  
Deidre Adams  
Natalya Aikens  
Pamela Allen  
Dale Barry  
Susan Callahan  
Jette Clover  
Cynthia Corbin  
Dianne Firth  
Laura Fogg  
Sylvia Gegaregian  
Sara Impey  
Patricia Kennedy-Zafred

Lorie McCown  
Jan Myers-Newbury  
Elin Noble  
Dan Olfe  
The Pixelaldies

Karen Rips  
Joan Schulze  
Robin Schwalb  
Mary Ann Tipple

## COLLECTION B

ARTIST  
Molly Allen  
Elizabeth Barton  
Leslie Bixel  
Brienne Brown  
Benedicte Caneill  
Chris Fee  
Cynthia Friedman  
Carol Goossens  
Patty Hawkins  
Catherine Kleeman  
Katherine Knauer  
Brigitte Kopp  
John Lefelhocz  
Kathleen McCabe  
Rita Merten

Kathy Nida  
Bonnie Peterson  
Judith Plotner  
Susan Polansky  
Leslie Rego  
Susan Shie

Sidnee Snell  
Joan Sowada  
Sandra van Velzen  
Nelda Warkentin  
Charlotte Ziebarth

## 21 PIECES

WORK  
*Tracings III*  
*The City*  
*My Town By The River*  
*Yellow Ladder*  
*2Top*  
*White Wall I 4*  
*Threadbare*  
*Storm*  
*Jammin'*  
*Bow Tie*  
*Bitter Pills*  
*Descent Into Darkness:*  
*The Boys of the Mines*  
*My Grandmother's Dresses*  
*Tilt-A-Whirl*  
*Fugitive Pieces II*  
*Texture Experiment #2 I*  
*American Still Life -*  
*The Weight of the Nation*  
*High Water Mark*  
*8 Meditations*  
*Jive Boss Sweat*  
*The Conversation*

## 26 PIECES

WORK  
*No One Knows, Not Even Poets, How...*  
*Legacy*  
*Decay*  
*Moonset*  
*Grieffiti*  
*Contemplating Self*  
*A Man Among Giants*  
*As Summer Slowly Fades...*  
*Sunlit Canyon*  
*Post No Bills*  
*Solar City*  
*Hands off! - Hau ab!*  
*Mona Lisa in the Age of Social Butterflies*  
*Agave in Black & White*  
*Plastic Trees #5*  
*Olive Grove in Ampolla, Spain*  
*Spread Out on the Pavement*  
*Kora (Pilgrimage)*  
*Urban Melody*  
*No One but You*  
*Four Seasons at the Beaver Pond*  
*Dragon Sushi; 9 of Pyrex Cups*  
*in the Kitchen Tarot*  
*Riveted*  
*Push*  
*Behind the Facades*  
*Bella Woods*  
*Reverberations: Yellowstone Waters*

Approximately 87 linear feet of work

SIZE (HORIZONTAL X VERTICAL)

60" x 60"  
56" x 40"  
48" x 60"  
52" x 39"  
30" x 24"  
52" x 52"  
36" x 61"  
56" x 26"  
53" x 43"  
53" x 53"  
58" x 38"  
43" x 63"  
39" x 46"  
63" x 89"  
65" x 45"  
54" x 39"  
60" x 60"  
46" x 29"  
30" x 55"  
63" x 48"  
92" x 72"

Approximately 113 linear feet of work

SIZE (HORIZONTAL X VERTICAL)

69" x 58"  
62" x 44"  
54" x 42"  
40" x 40"  
65" x 31"  
27" x 21"  
39" x 53"  
34" x 44"  
28" x 52"  
25" x 45"  
86" x 86"  
52" x 42"  
64" x 64"  
24" x 24"  
65" x 83"  
67" x 72"  
68" x 70"  
24" x 56"  
49" x 65"  
28" x 50"  
60" x 86"  
30" x 31"  
25" x 38"  
46" x 42"  
60" x 48"  
42" x 62"

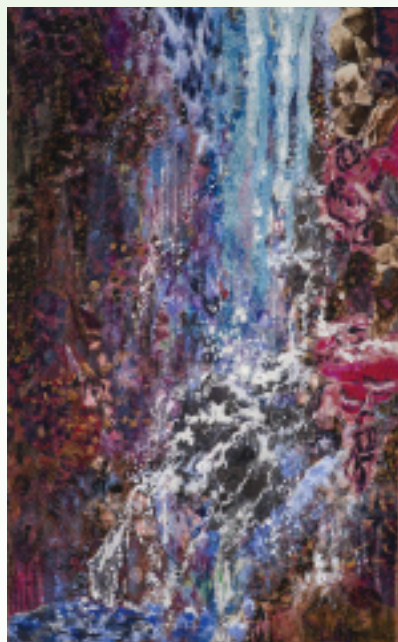




THE DAIRY BARN ARTS CENTER  
8000 DAIRY LANE . PO BOX 747  
ATHENS OHIO 45701  
phone 740.592-4981 . fax 740.592.5090  
e-mail arts info @ dairybarn.org  
www.dairybarn.org

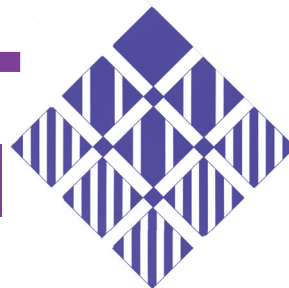


John Lefelholz  
Mona in the Age of Social Butterflies  
COLLECTION B



Marianne Williamson  
Hidden Falls  
COLLECTION C

# QUILT National



## COLLECTION C

### ARTIST

Brooke Atherton  
Susan Brooks  
Peggy Brown  
Rachel Brumer  
Marianne Burr  
Christine Chester  
Sue Cunningham  
Sheila Frampton-Cooper  
Kate Gorman  
Sandy Gregg  
  
Leslie Hall  
Judy Hooworth  
Lisa Kijak  
Paula Kovarik  
Susan Lenz  
Linda Levin  
Denise Linet  
Eleanor McCain, Kevin Womack

Miriam Nathan-Roberts  
Katie Pasquini Masopust  
Mary Rowan Quinn  
Luanne Rimel  
Pam RuBert  
Dinah Sargeant  
Anne Smith  
Lura Smith  
Kate Themel  
Martha Warshaw  
Carol Watkins  
Kathy Weaver

Marianne Williamson  
Marian Zielinski

## 32 PIECES

### WORK

SpringField  
Together  
Soliloquy II  
Large Regional Still Lives  
Thru the Lens  
Layers of Memory  
NetWork I  
From a Seed  
Bernadette in Artichokes  
Listen to the Rhythm  
of the Falling Rain  
Casual Query #3  
Creek Drawing #8  
El Cortez, Las Vegas  
Round and Round It Goes  
Circular Churchyard  
Central Park West Sunrise  
Letters to Myself - Page 4  
Swaddling to Shroud -  
Birthing Bed  
Salt and Pepper  
Dolente (Sorrowfully)  
High Expectations  
Enigma with a Flower  
Seattle - Wish You Were Hair  
Old Child  
Gabriel  
Passage  
Morgan's Flight  
Textiles Nine Patch 8  
Vintage  
Biomechatronics Development  
Lab 2 v2  
Hidden Falls  
Goodnight, Sweet Prince

Approximately 133 linear feet  
SIZE (HORIZONTAL X VERTICAL)

32" x 97"

66" x 39"

50" x 35"

60" x 72"

46" x 39"

44" x 39"

39" x 67"

55" x 41"

60" x 30"

54" x 41"

58" x 41"

48" x 64"

38" x 56"

54" D

86" x 53"

45" x 58"

41" x 31"

72" x 72"

39" x 56"

54" x 71"

39" x 56"

42" x 23"

65" x 41"

52" x 43"

72" x 63"

24" x 23"

38" x 38"

24" x 24"

26" x 22"

48" x 53"

65" x 40"

59" x 44"

## QUILT National '13 TOURING EXHIBITS

### RENTAL FEE SCHEDULE

	Group "A" 21 works	Group "B" 26 works	Group "C" 32 works
1 week	\$ 750	\$ 935	\$1120
2 weeks	1275	1590	1900
3 weeks	1800	2245	2688
4 weeks	2250	2805	3360
5 weeks	2625	3275	3920
6 weeks	2925	3645	4370
7 weeks	3150	3930	4705
8 weeks	3300	4115	4930
9 weeks	3375	4210	5040
10+ weeks	375/ week	467/week	560/week

Repeat Host Venues are entitled to a 10% discount on the total rental fee.



THE DAIRY BARN ARTS CENTER  
8000 DAIRY LANE . PO BOX 747  
ATHENS OHIO 45701  
phone 740.592-4981 . fax 740.592.5090  
e-mail arts info @ dairybarn.org  
www.dairybarn.org



Elizabeth Barton  
*Legacy*  
COLLECTION B



Lisa Kijak  
*El Cortez, las Vegas*  
COLLECTION C



Lorie McCown  
*My Grandmother's Dresses*  
COLLECTION A

# QUILT National



## CURRENTLY SCHEDULED TOUR VENUES

### QUILT National '11

The Dairy Barn Arts Center	Athens, OH	May 27–September 5, 2011
The Foundry Art Centre ABC	St. Charles, MO	October 20 – November 4, 2011
San Jose Museum of Quilts & Textiles AB	San Jose, CA	February 14 – April 29
Doris Ulman Galleries Berea College A	Berea, KY	June 11 – August 10, 2012
Dishman Art Museum Lamar University A	Beaumont, TX	September 23 - November 18, 2012
Fredericksburg Area Museum & Cultural Center B	Fredericksburg, VA	October 1 – December 31, 2012
Oceanside Museum of Art C	Oceanside, CA	October 21, 2012 – February 12, '13
Ohio Craft Museum B	Columbus, OH	February 3 – March 24, 2013
Dunedin Fine Art Center B	Dunedin, FL	May 31 – August 11, 2013
17th European Patchwork Meeting Selections from Collections A & C	Alsace, France	September 15 – 18, 2013

### QUILT National '13

The Dairy Barn Arts Center ABC	Athens, OH	May 25 – September 2, 2013
St. Louis University Museum of Art ABC	St. Louis, MO	September 20 – October 27, 2013
San Jose Museum of Quilts & Textiles AB	San Jose, CA	May 6 – July 20, 2014
The Riffe Gallery C	Columbus, OH	January 15 – April 13, 2014
Historical and Cultural Society of Clay County B	Moorehead, MN	August 14 – September 28, 2014