



THE DAIRY BARN ARTS CENTER

ANNUAL REPORT 2021



2021 was a year of inspiration, imagination, and creativity.

Over the past year, we were asked to embrace change at an expedited pace, and The Dairy Barn rose to this challenge with a great deal of aptitude and grace. I am incredibly grateful for the partnership and participation of more than 142 artists, 4,966 visitors, and 601 members and donors who made this year a success. You are the reason The Dairy Barn shines so brightly as a place to celebrate art.

The Dairy Barn exhibited three remarkable shows this year, *Women of Appalachia*, *Quilt National '21*, and *Contemporary Ceramics*. With health and safety at the forefront, these exhibitions were accompanied by a myriad of online and off-site opportunities such as virtual artist talks, take-home art kits, online exhibition tours, and recorded videos. These resources ensured that art enthusiasts from far and wide had numerous opportunities to enjoy our gallery, regardless of location.

Arts education proved to be particularly meaningful in 2021, as we expanded our reach through collaboration, Summer Art Camp scholarships, and high-end virtual workshops that attracted participants from around the world. To trail-blaze these exciting programs, The Dairy Barn welcomed employee Kelly Shaw into her new position as education director. Kelly has been a part of The Dairy Barn team for 5 years, and is already contributing great new ideas to the education program in her new role.

The Dairy Barn Arts Center has always been a welcoming place for the community to come together and share in the experience of art. It is our members, volunteers, donors, and staff who make the Barn such a special place. We have so many accomplishments to celebrate this year, and we are beyond grateful for the support of our fabulous community. Thank you!

Leah Magyary
Executive Director

BOARD AND STAFF

2021 EXECUTIVE COMMITTEE

Jay Hostetler, *Chair*
 Nancy Stevens, *Vice Chair*
 Polly Sumney, *Treasurer*
 Jacquelin Weber, *Secretary*
 Terry Hogan, *Past Chair*

2021 BOARD OF TRUSTEES

David Burke
 Rachael Crouch
 David Johnson
 Lynn Lovdal
 Juan Thomassie
 David Reiser
 Emily Cranz Richards
 Kate Albe Shافتel
 Christina Baird
 Ellen Gray
 Jessica Thomas
 David Thomas
 Nikki Sherman

STAFF

Executive Director,
 Leah Magyary: director@dairybarn.org
Director of Finance,
 Piper Toth: finmanager@dairybarn.org
Exhibitions & Quilt National Director,
 Holly Ittel: holly@dairybarn.org
Education Director,
 Kelly Shaw: kelly@dairybarn.org
Gallery Shop Manager,
 Claire White: claire@dairybarn.org
Facility Manager,
 Reid Secoy: reid@dairybarn.org
Graphic Designer,
 Marilyn Krupa
Studio Manager,
 Rebekah Halbirt



Photo: cleanup and repair of the barn, 1978



MISSION

To offer exhibitions, events, and educational programs that nurture and promote area artists and artisans, develop art appreciation among all ages, provide the community access to fine arts and crafts from outside the region and draw attention and visitors to Southeast Ohio.

2021 EXHIBITION IMPACT



VIRTUAL
PARTICIPANTS
1,957



Reach by Jamie Bates Slone

ON-SITE VISITORS
3,150



Still from Artist Talk by Valerie Goodwin

EXHIBITING ARTISTS
142

WOMEN OF APPALACHIA FINE ART EXHIBITION



Magical Lady Slippers by Karen Eve Bayne



Even Though I'm Not "Working," I'm Working by Kasey Jones



Under the Couch by Beth Nash

“ Providing opportunity for women from the greater Appalachian region to exhibit their fine art, raw and unfiltered, allows us to openly celebrate our heritage and culture, throw open the doors, share experiences and ideals, and challenge stereotypes. ”

*-Kari Gunter-Seymour,
Executive Director of Women
of Appalachia Project and Poet
Laureate of Ohio 2020-2021*





QUILT NATIONAL '21



“ *The Quilt National '21* collection is a reflection of 2020, with many of the artworks created or finished during the COVID-19 pandemic and in the height of the Black Lives Matter movement. Several of the quilts in this biennial exhibit express the shared experience of COVID-19 both broadly, and through individual experiences delicately presented before us. While none of us had identical experiences in this past year, as referenced in *Same Storm, Different Boat* by Jill Jensen, I am able to see many of my own fears addressed in the artworks too. ”

-Holly Ittel,
Exhibitions Director

CONTEMPORARY CERAMICS

CURATED BY TOM BARTEL AND BRAD SCHWIEGER



A Pint for a Gallon by Benjamin Lambert



A Marriage of Convenience by Richard W. James



Untitled Fragment by Tim Rowan

“ Both Tom Bartel and I wanted to include artists who are producing more abstracted sculpture. Tom selected artists whose focus is on the figure, while as a potter, I was interested in selecting artists who address the vessel in their work. ”

- Brad Schwieger
Show Curator

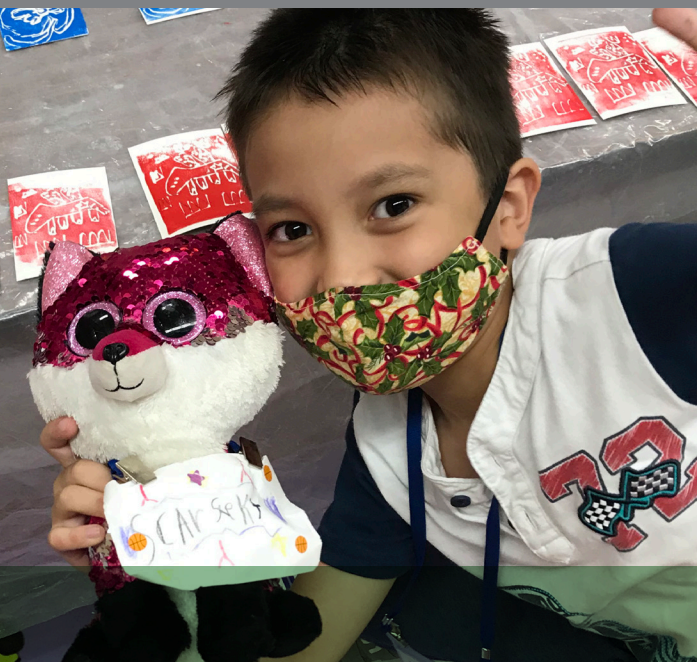


2021 SUMMER ART CAMP

SUMMER
ART CAMPERS
143



CAMP
SCHOLARSHIPS
40



WEEKS OF CAMP
6





CLASSES AND WORKSHOPS

CLASSES AND
WORKSHOPS
28



INSTRUCTORS
12



PARTICIPANTS
206



STUDIOS



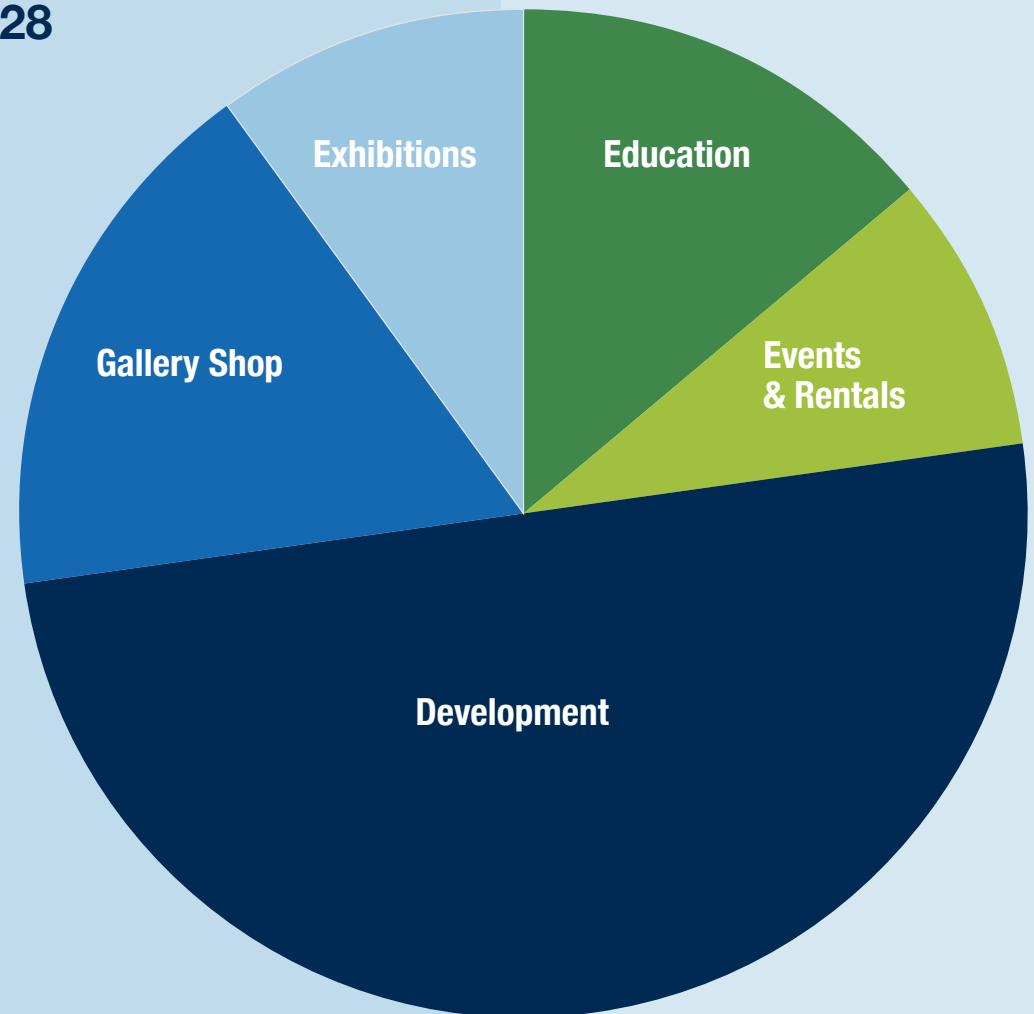
“ When my high school art studios closed for Covid during my senior year, I had a hard time finding a place to continue doing ceramics and to photograph my work for my college application. The Dairy Barn came through for me— my membership allowed me access to the studio to complete my portfolio and to photograph it. Kelly Shaw helped me create professional-looking photographs, which helped me get into the top ceramics school in the country! I feel lucky and grateful to have access to this studio, which I use whenever I’m back in town from college.”

- Abby Crawford,
Dairy Barn Member

REVENUE

REVENUE (TOTAL \$) **\$641,282.28**

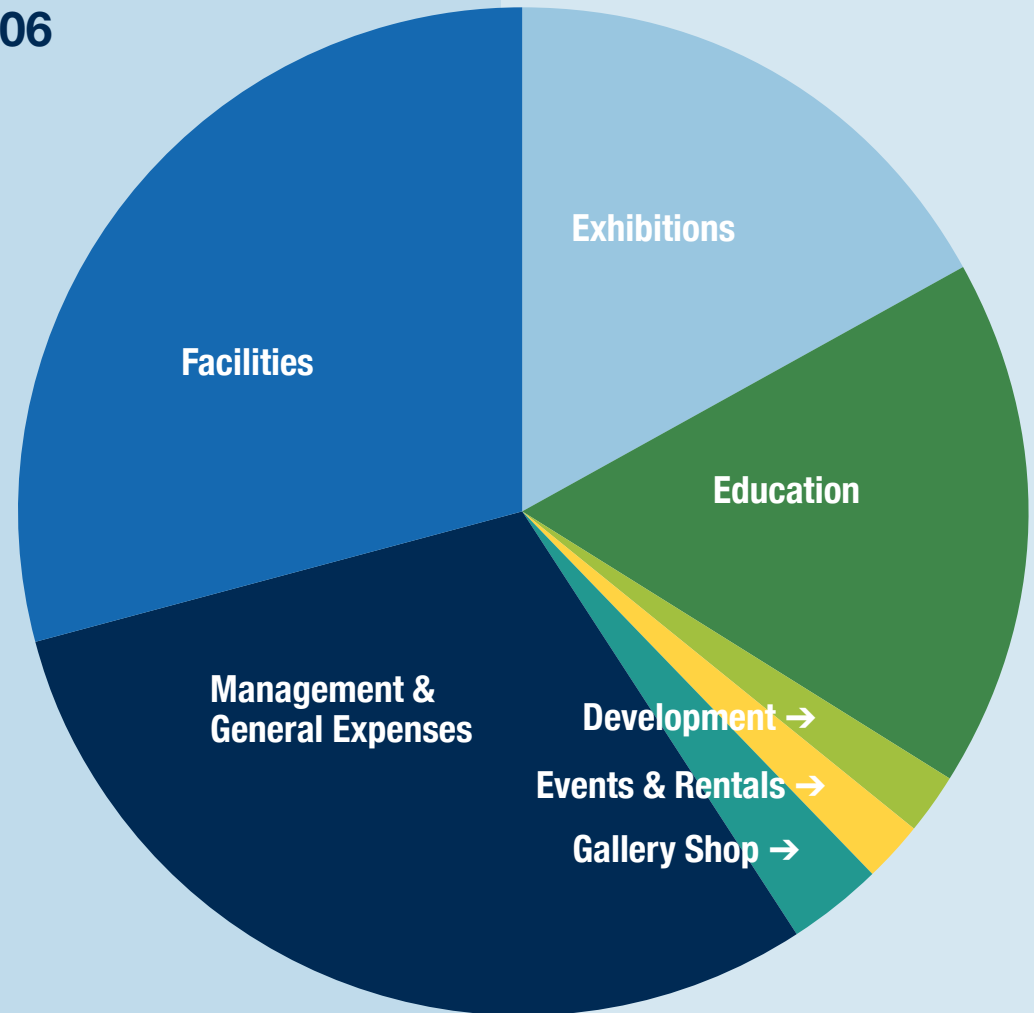
Exhibitions	10%
Adult and Youth Education	14%
Events and Rentals	9%
Development	50%
Includes Donations, Memberships, and Grants	
Gallery Shop	17%



2021 EXPENSES

EXPENSES (TOTAL \$) **\$460,308.06**

Exhibitions	17%
Adult and Youth Education	17%
Events and Rentals	2%
Development	2%
Gallery Shop	3%
Facilities	30%
Management and General Expenses	29%





THANK YOU TO OUR MEMBERS AND DONORS

SPONSORS

11

MAJOR DONORS

Anne Braxton
Jeff Chaddock & Mark Morrow
Mary Costello
Marvin Fletcher
Don M Flourney
Lynn Last Rothstein and Mark Rothstein
Nikki and Hugh Sherman
Creston and Sarah Stewart

DONORS

293

MEMBERS

448

GRANTS AND SPONSORS

Athens County Convention
and Visitors Bureau
Athens County Foundation
Athens Eye Care LLC
Aurifil
Crow Timber Frame Barn
Envisage Wealth
Epstein Teicher Philanthropies
eQuilter, Inc
Foundation for Appalachian Ohio
Hocking Valley Bank
Jackie O's
Japanese Handicraft Association
Kleinpenny Educational Fund
Moda Fabrics

Mountain Mist
Nelsonville Quilt Company
Nihon Vogue
Ohio Arts Council
Ohio Humanities Council
Ohio Quilts!!
Ohio University College of Fine Arts
Ohio University School of Art + Design
Quidel
Quilt Surface Design Symposium
Robert and Ardis James Foundation
Studio Art Quilt Associates
Surface Design Association
The Kennedy Museum of Art
Women of Appalachia Project



WAYS TO GIVE

MEMBERSHIP

The Dairy Barn's membership program helps grow a community of art lovers who appreciate all the great things our gallery and studio spaces have to offer. By becoming a member, you not only support the Barn, but also get a range of benefits like free admission and discounts for you and your family.

DONATIONS

Every donation makes an impact! Your tax-deductible donation goes straight towards growing our education programs, supporting our artists and exhibitions, and making programs like Summer Art Camp a meaningful experience.

RECURRING GIVING

Recurring donations are one of the most valuable ways you can support an organization you love. Giving monthly helps provide predictable revenue a non-profit can rely on, all while being easy on your household budget.

ENDOWMENT CONTRIBUTIONS

Contributing to The Dairy Barn's endowment is a great way to help sustain The Dairy Barn well into the future. Your contribution becomes a sustainable part of The Dairy Barn's revenue stream and helps keep the mission strong for generations to come.

LEGACY GIFTS

There are many ways to celebrate your legacy by setting up a planned gift to The Dairy Barn. If you are considering adding the Barn as a beneficiary to your will or trust, we can help you make a plan.

MATCHING GIFTS

Many companies have matching gift programs that will grow your donation to The Dairy Barn Arts Center. Check with your employer today to see if they have a program available.

VOLUNTEERING

Your time and talent are valuable! The Dairy Barn works with volunteers throughout the year to help in our gallery, keep our hiking trail maintained, and help during special events.

Membership payments and donations can be made online at www.dairybarn.org or by sending a check to:

The Dairy Barn Arts Center
8000 Dairy Lane, Athens, Ohio 45701.

If you have any questions about how you can support The Dairy Barn, contact us at [740-592-4981](tel:740-592-4981) or director@dairybarn.org.

Your support matters!

In Memoriam

Donna Cunningham was an exceptional friend, volunteer, and donor to The Dairy Barn Arts Center.

Her dedication was exemplified through over 40 years of service to the Barn. Her kindness and bright spirit are greatly missed.



THANK YOU!

