

THE DAIRY BARN ARTS CENTER



2023

YEAR IN REVIEW



A Letter from the Executive Director

In February 2023, The Dairy Barn Board and staff came together to develop our strategic plan and reflect on the core principles that make The Dairy Barn truly exceptional. During this process, it quickly emerged that beyond its role as a hub for artistic expression, The Dairy Barn holds a treasured spot in the heart of Athens, its rich history intertwining seamlessly with its present-day significance as an arts center. ***Our story is unique, as are the people and communities who have supported it since its start in 1978.***

I am delighted to announce that in 2023, we took significant strides forward by reassessing and updating our mission, vision, and values. These guiding principles reflect our unwavering dedication to innovation, inclusivity, and excellence, shaping every aspect of our work and interactions within the community.

Furthermore, I am excited to share that we have implemented a comprehensive three-year strategic plan, outlining our goals and objectives for the future. This strategic roadmap will guide our efforts as we expand our reach, enhance our programs, and strengthen our impact on the communities we serve.

I extend my deepest appreciation to the artists, collaborators, visitors, members, and donors who breathe life into our mission daily. The stories we share within this report illuminate the moments of inspiration and connection that resonate with our community. Together, we continue to shape The Dairy Barn as a dynamic space for exploration and creativity.

Sincerely,

Leah Magyary
Executive Director



Beginning in 1867

Our Story

Originally part of the Athens State Hospital, the land surrounding The Dairy Barn has a storied past dating back to 1867. It served as a dairy operation, supplying milk to the State Hospital, and later evolved into a center of excellence in animal husbandry and herd improvement.

Over time, The Dairy Barn became a vital therapeutic and vocational resource for patients. However, as farming practices changed and patient employment declined, the future of the barn became uncertain. In 1978, the Athens community saved it from demolition, leading to its transformation into the non-profit arts center it is today.

Since its establishment as The Dairy Barn Southeastern Ohio Cultural Arts Center in 1978, it has become a leader of creativity and community engagement, hosting internationally renowned exhibitions and events. The legacy of The Dairy Barn extends beyond its physical structure, impacting the artistic landscape of Athens and beyond.



Rooted in its Unique History

Mission, Vision, Values

MISSION

Rooted in its unique history, The Dairy Barn Arts Center enriches lives and cultivates community through equitable access to the arts.

We do this by:

- Welcoming everyone, local and visiting patrons alike, with a quality visitor experience.
- Providing impactful exhibitions, events, and educational programs.
- Supporting artists throughout their creative journey.
- Celebrating our unique Southeastern Ohio history through storytelling and historic preservation.
- Promoting international appreciation of art quilts through the world-renowned exhibition, *Quilt National: The Best of Contemporary Quilts*.

VISION

We envision a world where all people can fully explore their creativity and artistic pursuits, affirming that art is a fundamental part of the human experience.

VALUES

- We champion the arts with passion and dedication.
- We are strengthened by diversity.
- We believe community and connection are essential pieces of our work.
- We take pride in sharing our story and legacy.
- We are resilient and ready, shovels in hand.



Exhibitions



13 EXHIBITIONS
showcasing
322 ARTISTS
from
24 COUNTRIES

We Expanded Our Presence With the Debut of the O'Bleness Gallery



We Shared Diverse Perspectives: Women of Appalachia Project Exhibition

“Providing opportunity for women from the greater Appalachian region to exhibit their fine art, raw and unfiltered, allows us to openly celebrate our heritage and culture, throw open the doors, share experiences and ideals, and challenge stereotypes”

– Kari Gunter-Seymour,
*Executive Director
of Women of Appalachia
Project and Poet Laureate
of Ohio*



Front: *White House Guest Book* by Patty Kennedy-Zafred
Rear: *Autumn Light* by Frauke Palmer

We Celebrated Global Creativity: Quilt National '23

ABOUT

Throughout its esteemed history since 1979, *Quilt National* has illuminated the fine arts world with its vibrant colors, boundless inspiration, and unwavering artistic excellence, despite quilting's historical oversight as a respected art medium. *Quilt National '23* saw the culmination of tireless efforts from talented individuals behind the scenes, including three exceptional jurors, Chiaki Dosho, Dr. Carolyn L. Mazloomi, and Irene L. Roderick, who meticulously reviewed submissions from 673 artists from 21 countries with keen discernment. The success of *Quilt National '23* is a testament to the dedication, vision, and collaboration of all those involved, underscoring The Dairy Barn's commitment to fostering creativity and celebrating artistic achievement.



Left: *Kimono#2* by Lynne Lee
Right: *Lifelines* by Emilie Trahan

We Celebrated Global Creativity: Quilt National '23



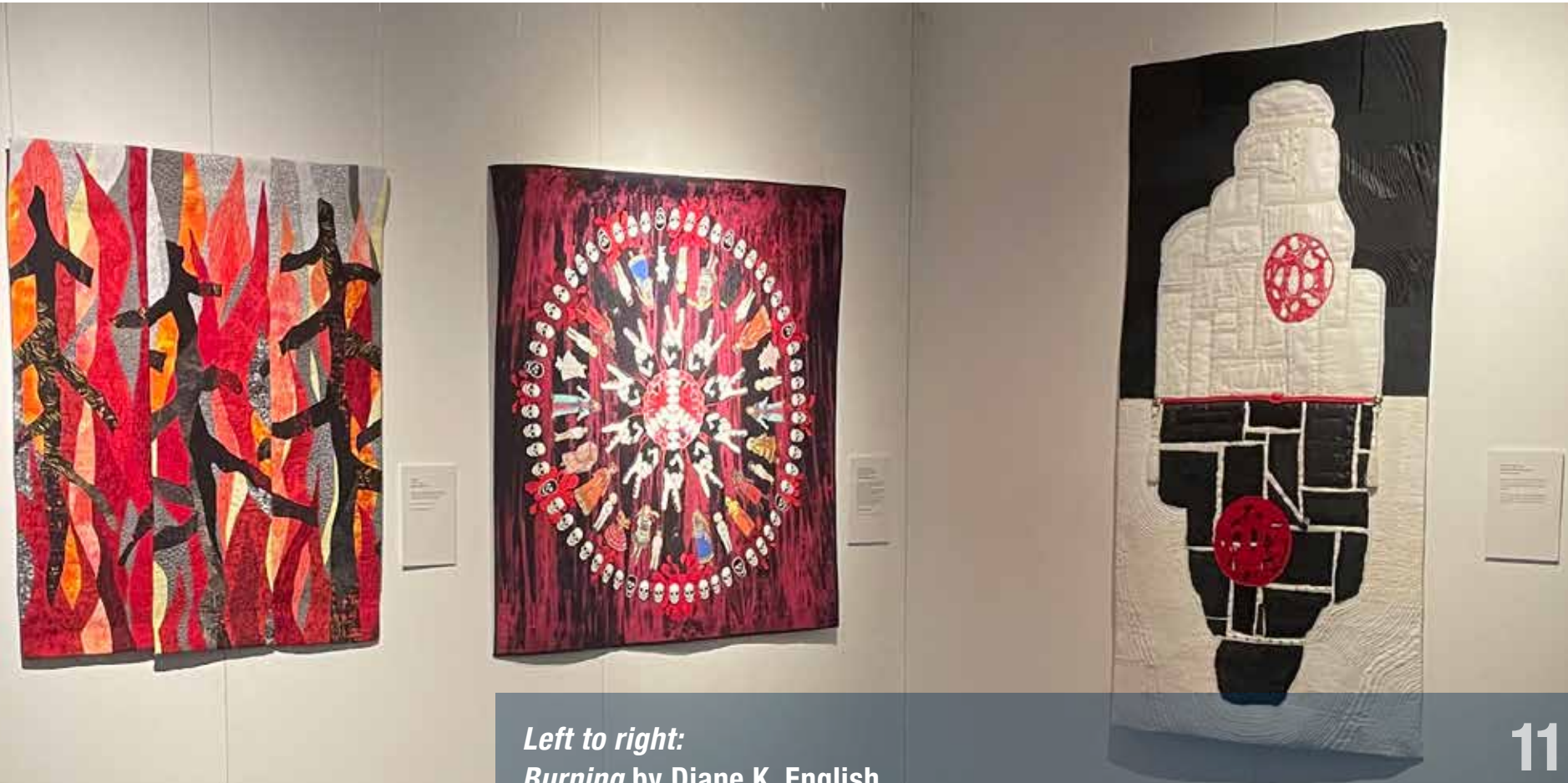
We Celebrated Global Creativity: Quilt National '23



**Australia • Belgium • Brazil • Canada • Chile • France • Germany
Great Britain • Hungary • Israel • Italy • Japan • Lithuania • Luxembourg
Mauritius • Northern Ireland • South Korea • Sweden
Switzerland • Taiwan • The Netherlands**

We Extended Arts Access: **Opposites Attract**

Through a diverse array of artwork, *Opposites Attract* explored the interplay between contradictions and affinities, from the dynamic balance of Yin and Yang to the tension between irresistible forces and immovable objects, and the stark contrast of black and white, among other dichotomies. Each piece invited viewers to contemplate the intricate dance of opposing forces that defined our world, both overtly and subtly.



Left to right:

Burning by Diane K. English

Atrocities: Women & War (Girls, Caught in the Crossfire) by Deborah K. Snider

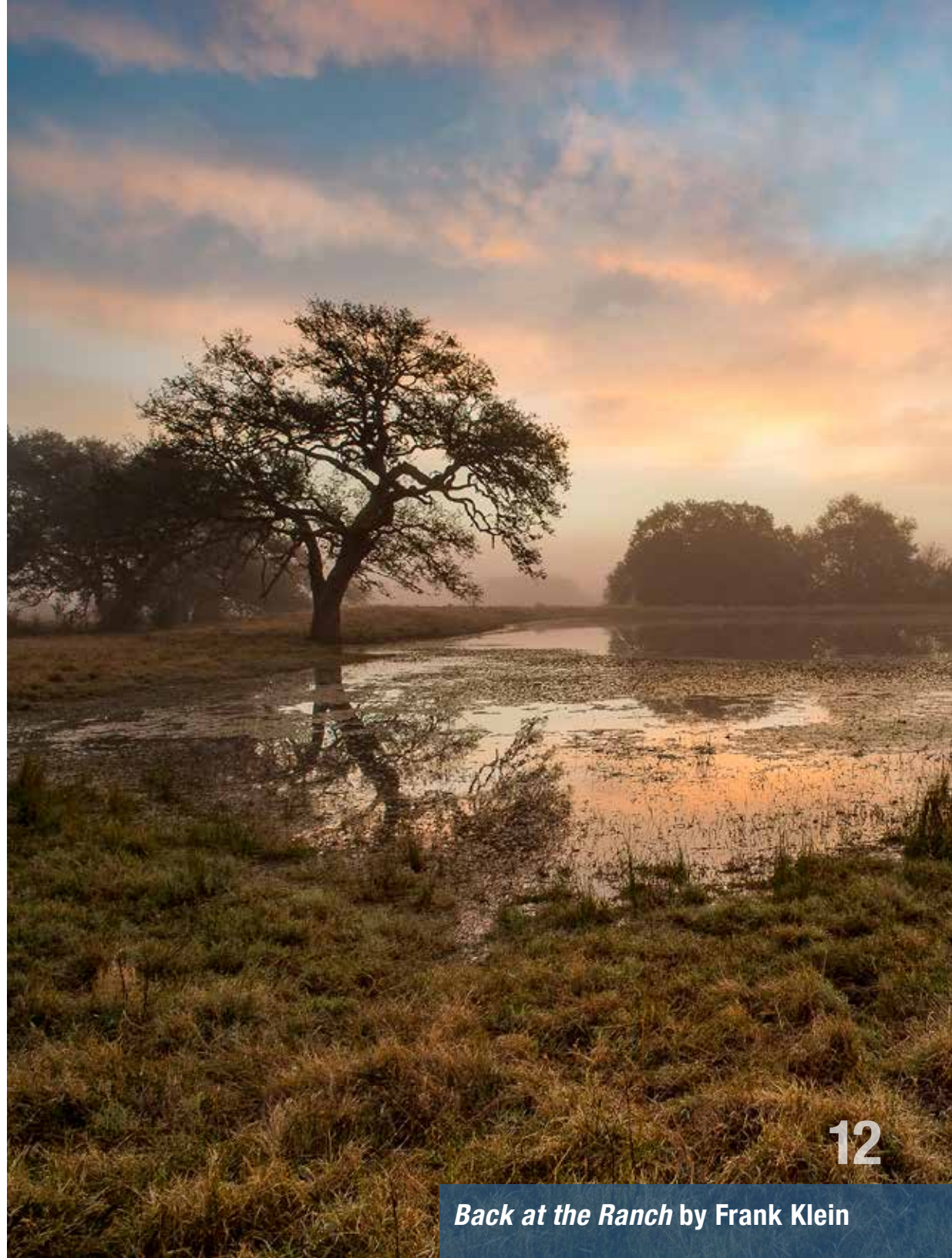
Samurai with Tsuba by Monique Gilbert-Oversteins

We Extended Arts Access: **Back at the Ranch**

“It has been a great joy, honor, and privilege to live on the ranch, where I have been able to watch the passing seasons. My family has owned this ranch in DeWitt County, Texas, since 1878. As the 4th generation, I now live in the ranch house where my mother was born.

My ranch is a sanctuary for blooming plants and nesting birds in the spring, where they are allowed to complete their life cycle. I have participated in various conservation practices, such as erecting 135 bluebird nest boxes, rotational grazing, and deferred mowing. The results of these conservation measures are shown in my photography. I have been able to document unique animal behaviors, such as male shrike birds impaling prey on barbed wire fences and thorns to attract females. This exhibit shares my cherished landscape, plants, and animals that I see every day “Back at the Ranch”.

– Frank Klein



We Nurtured Tomorrow's Artists



“Our son LOVED art camp - meeting new friends, creating art, all of it! Appreciate the positive and inclusive culture as well.”

– Summer Art Camp Parent

**6 WEEKS
of camp**

**250 PARTICIPANTS
from
7 COUNTIES**

We Inspired Lifelong Learning



"I learned so much. I'm so appreciative of the patience you showed us, the deep knowledge you have, and your ability to help us continue to experience the joy of making stained glass outside of class. I've just learned a new lifelong craft."

– Stained Glass Student

We Strengthened Community Bonds



2023 Revenue

REVENUE (TOTAL \$) **\$532,203.18**

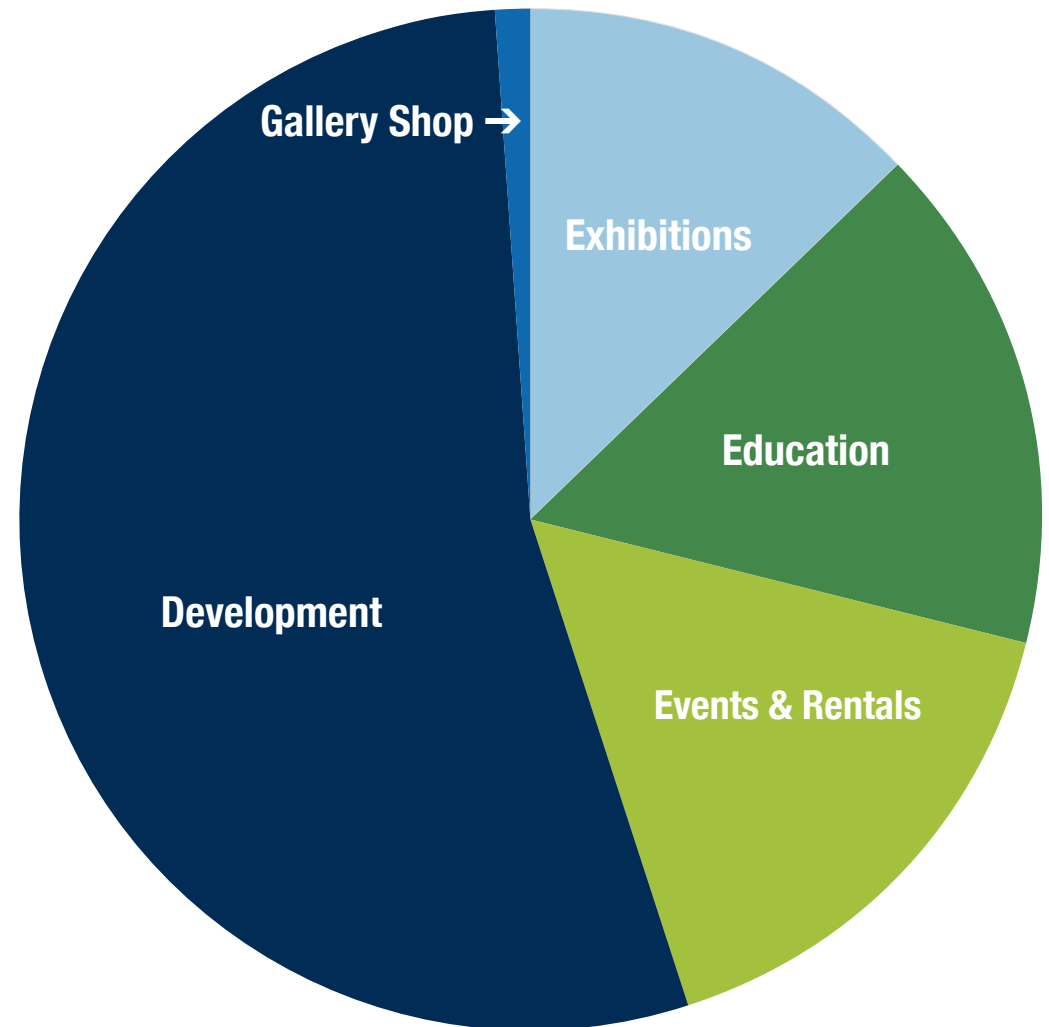
EXHIBITIONS **13%**

**ADULT
AND YOUTH EDUCATION** **16%**

EVENTS AND RENTALS **16%**

DEVELOPMENT **54%**

GALLERY SHOP **1%**



2023 Expenses

EXPENSES (TOTAL\$) **\$565,092.57**

EXHIBITIONS **11%**

**ADULT
AND YOUTH EDUCATION** **24%**

EVENTS AND RENTALS **4%**

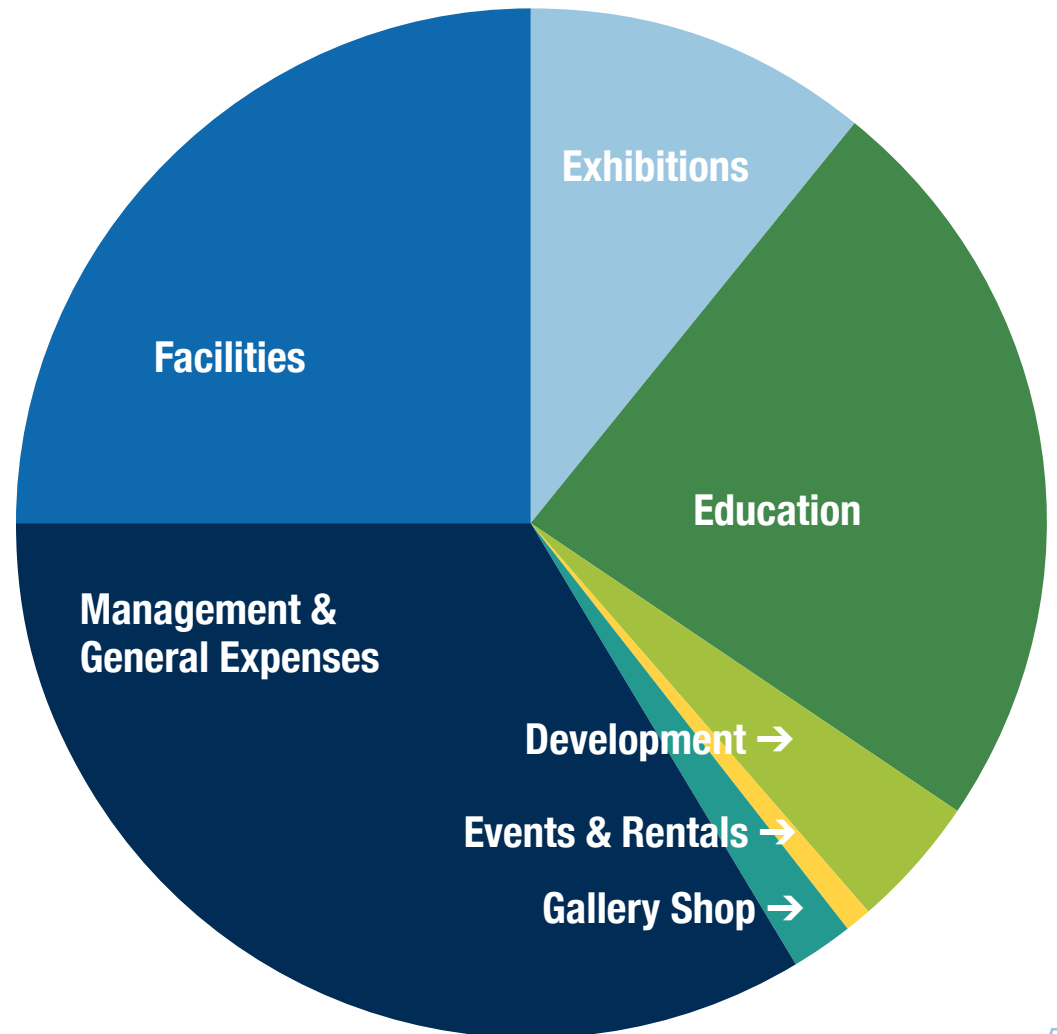
DEVELOPMENT **1%**

GALLERY SHOP **2%**

FACILITIES **34%**

**MANAGEMENT AND
GENERAL EXPENSES** **25%**

Expenses include the use of restricted funds
raised in past fiscal years.



Who We Are

2023 EXECUTIVE COMMITTEE

Polly Sumney, *Chair*
Jacquelin R. Weber, *Vice Chair*
Jessica Thomas, *Treasurer*
Christina Baird, *Secretary*
Jay Hostetler, *Past Chair*

BOARD OF DIRECTORS

Susan Calhoun
Keith Chapman
Tim Goheen
Ellen Gray
David Johnson
Kristyn Neckles
David Reiser
Susan Roth
Nikki Sherman
Nancy Stevens
Aaron Thomas
David Thomas
Juan Thomassie

STAFF

Executive Director,
Leah Magyary
Education Director,
Kelly Shaw
Director of Exhibitions,
Keri Ann Wolfe
Studio Manager,
Rebekah Halbirt
Guest Services Manager,
Lacy Davis
Guest Services Coordinator,
Claire White
Facility Manager,
Reid Secoy
Bookkeeper,
Deborah Daniels



Who We Are

SEASONAL STAFF

Lucia Grunden,
Summer Art Camp Inclusion Aide

Ryan Evans,
Summer Art Camp Group Leader

Jean Vandervaart,
Summer Art Camp Group Leader

Gabriella Benington,
Summer Art Camp Coordinator

Marilyn Krupa,
Graphic Design Services

Emma Caldwell,
Event Bartender

Jayne Coldiron,
Event Bartender

Dandelion Duff,
Event Bartender

Marcus Dobro,
Event Bartender

2023 TEACHING ARTISTS

Alexandra Valentino

Alison Schwabe

Allyson Pappas

Aubrey Arndt

Bonnie Proudfoot

Carolina Oneto

Chip Wagner

Cindy Poland

Cynthia Carbone

Danette Pratt

Erica Magnus

Hannah Rutkowski

Hillary Gattian

Jessica Held

Julie Beaudry

Katrina (Aubrey) Arndt

Katrina Arndt

Lynda Berman

Margaret Gustafan

Meta Von Nostran

Quinn Schmalenberg

Sara Severns

Susan Cortese

Susan McAtee

Theodore Maringer

Tobe Gillogly



We Did it with You: Thank You to Our Members and Donors

MAJOR DONORS:

Don M. Flournoy
Joel Laufman
Jeff Chaddock and Mark Morrow
David Reiser
Nikki and Hugh Sherman
Sarah Helfrich and Creston Stewart
Lynn Last Rothstein and Mark Rothstein
Marvin Fletcher

SPONSORS AND GRANTS:

The O'Bleness Foundation
Ohio Arts Council
Athens County Foundation
Envisage Wealth
Foundation for Appalachian Ohio
America Online Giving
Kleinpenny Educational Fund
The Columbus Foundation
Hocking Valley Bank
OHIO Museum Complex
Woodmen of America
Fidelity Charitable
Equilter.com
Hartman Insurance
Studio Art Quilt Associates
Ameriprise Financial
Amanda Sharrai with The Athens Real Estate Company
Visit Athens County
Crow Timber Frame Barn
Moda Fabrics + Supplies
Robert & Ardis James Foundation
Aurifil
The Pumphrey Family
J. Warren McClure Athens Education Foundation



Ways to Give

MEMBERSHIP

The Dairy Barn's membership program helps grow a community of art lovers who appreciate all the great things our gallery and studio spaces have to offer. By becoming a member, you not only support the Barn, but also get a range of benefits like free admission and discounts for you and your family.

DONATIONS

Every donation makes an impact! Your tax-deductible donation goes straight towards growing our education programs, supporting our artists and exhibitions, and making programs like Summer Art Camp a meaningful experience.

RECURRING GIVING

Recurring donations are one of the most valuable ways you can support an organization you love. Giving monthly helps provide predictable revenue a non-profit can rely on, all while being easy on your household budget.

ENDOWMENT CONTRIBUTIONS

Contributing to The Dairy Barn's endowment is a great way to help sustain The Dairy Barn well into the future. Your contribution becomes a sustainable part of The Dairy Barn's revenue stream and helps keep the mission strong for generations to come.

LEGACY GIFTS

There are many ways to celebrate your legacy by setting up a planned gift to The Dairy Barn. If you are considering adding the Barn as a beneficiary to your will or trust, we can help you make a plan.

MATCHING GIFTS

Many companies have matching gift programs that will grow your donation to The Dairy Barn Arts Center. Check with your employer today to see if they have a program available.

VOLUNTEERING

Your time and talent are valuable! The Dairy Barn works with volunteers throughout the year to help in our gallery, keep our hiking trail maintained, and help during special events.

Membership payments and donations can be made online at www.dairybarn.org or by sending a check to:

The Dairy Barn Arts Center
8000 Dairy Lane, Athens, Ohio 45701.

If you have any questions about how you can support The Dairy Barn, contact us at 740-592-4981 or director@dairybarn.org.

Your support matters!

Thank You!



THE DAIRY BARN ARTS CENTER

8000 Dairy Lane, Athens, Ohio | 740.592.4981
www.dairybarn.org